



Who is Safa Door?

Safa Door & Furniture, a concern of **Safa Star Ltd.**, was founded in 2015 by a group of young and visionary business minds including entrepreneurs, engineers and enthusiasts in furniture segment.

Safa Door has a very simple vision of transforming traditional furniture industry by delivering unmatched value to its customers. **Safa Door's** motto is to fulfil customers' core unmet need:

"Your Furniture...Your Signature"

How it's different?

Safa Door is not like conventional neighborhood furniture outlet offering cheaper products but not capable to meet your high-quality aspiration combining best merit, material, machine and making due to their limitations and high dependency.

Safa Door is also not like so called mass brand outlet who will feed you their preset 'one size fits all' formula at super normal price but not capable or flexible enough to meet your own customization requirements.

Why Safa Door?

Safa Door is committed to deliver unique value to its clients at a competitive price adapting flexibility with minute attention to their tailored needs combining 7 unparallel factors:

- Top grade materials
- High standard processing
- Integrated production facility
- Upgraded tools and technology
- Expert and experienced workers
- Modern and elegant design
- Fine and flawless finishing

What is Special?

Professional about Standards:

- Long industry experience
- Skilled management
- Trained carpenters
- Complete factory setup
- High volume capacity
- Validated production process
- Quality assurance system

Passionate about Customers:

Customers' need is our top priority. Customers can engage at any stage of:

- Product choice
- Feature selection
- Design decision
- Special customization
- On-floor inspection

Door and furniture purchase is a lifetime dream and significant investment for many customers. You must expect to meet your complete set of needs without compromising any critical quality parameter. Safa Door's commitment to deliver **7M Quality** "Makes Dream Real" for you.

Wood Type: selecting based on strength, durability, workability, beauty and price.

Wood Grade: grading based on size, thickness, maturation, intactness, heartwood and sapwood content.

Wood Cut: sawing precisely based on size and fiber of lumber.

Chemical Treatment: protecting bug infestation; increasing stability and durability.

Pressure Treatment: preventing bending, wear and tear in the long run.

Seasoning: inhibiting moisture absorption, bending and quality deterioration.

Providing best value for money you pay without compromising the quality you deserve.

Ensuring solid and robust structural built using modern and integrated tools and techniques.



Sanding: careful & precise sanding giving immaculate finishing.

Sealing: appropriate sealing to prevent moisture reabsorption and decay.

Polishing: expert polishing and painting as per customers' taste.

Design: trendy and elegant motif as per customers' taste and preference.

Precision: execution by experts with attention to details.

Aesthetics: drawing adherence for overall outlook and beauty.

Workmanship: trained and experienced high expertise at all steps of production.

QC: strict quality inspection at all phases of processing.

QA: overall TQM system maintaining high standards.

7M Quality

"Commit to Deliver...Deliver the Commitment."

As natural product, every species of wood has its own pros and cons. Quality management from beginning to finishing is vital to get best product out of any wood. Safa Door strives for quality at every stage in selection, processing, production and finishing to meet customers' expectation.

Grading:

- P

Premium

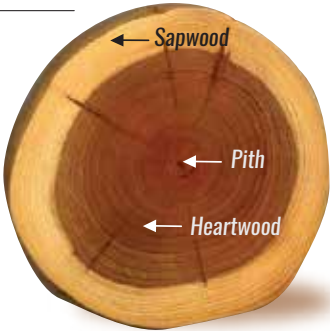
Top grade: ≥ 98% heartwood; ≤ 2% sapwood; contains almost no crack or pith.
- S

Selection

High grade: ~95% heartwood; ~5% sapwood; mostly crack and pith free.
- R

Regular

Regular grade: woods with normal quality checks without any major fault.



Treating:

- A

Automatic Pressure

Quick and maximum preservatives penetration preventing bug infestation and tension bending.
- T

Traditional Tank-Dip

Optimum preservatives penetration giving long term bug protection.
- M

Manual

Surface preservatives application fairly preventing bug infestation.
- N


Natural

Some woods naturally have bugs retardant property for quite long time.


Seasoning:

- C

Control Chamber

Rapid drying under controlled temperature and humidity resulting best quality.
- N

Natural Air

Slow drying under natural air and heat; lacking optimum and uniform moisture content.

Polishing :

- V

Varnish
- L

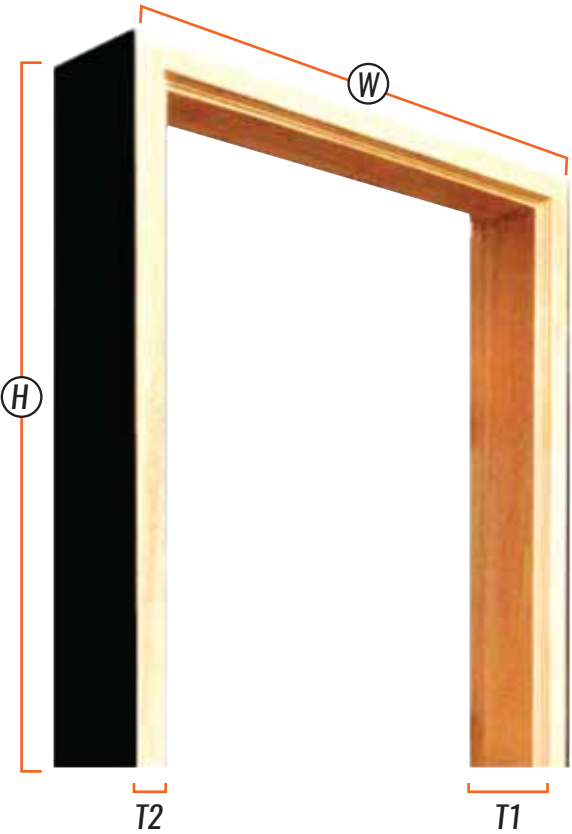
Lacquer
- D

Duco

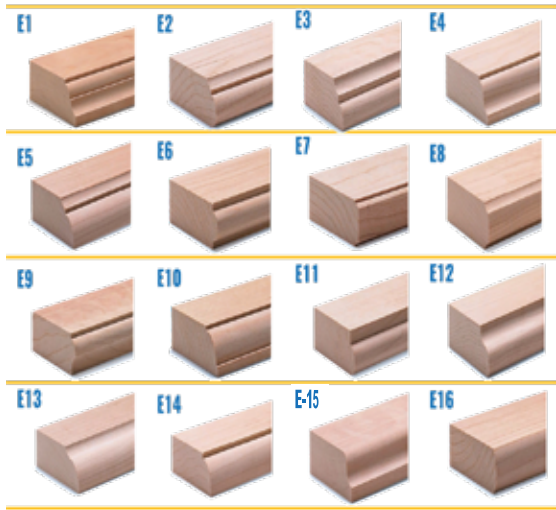


Each option has different levels of finishing like Mat, Satin, Semi-Gloss and Full-Gloss; and is suitable for different projects and purposes and has its advantages and disadvantages.

WOOD DOOR FRAME



Edge Design:



Frame Size

Size	H	W	T1	T2
D2	84"	72"	5.75"	2.25"
D1	84"	60"	5.75"	2.25"
L3	84"	48"	5.75"	2.25"
L2	84"	42"	5.75"	2.25"
L1	84"	40"	5.75"	2.25"
M2	84"	39"	5.75"	2.25"
M1	84"	36"	5.75"	2.25"
S	84"	30"	5.75"	2.25"
C	Custom			

Wood Choice

Code	Wood	Look (Illustration Only)
MG	Mahogany	
SK	Shil Korai	
LA	Loha (Azobe)	
TC	Teak (Chattogram)	
TB	Teak (Burma)	
TM	Teak (Chambol)	

WOOD DOOR

Door Size

Size	H	W	T1
D2	82"	69"	1.5"
D1	82"	57"	1.5"
L3	82"	45"	1.5"
L2	82"	39"	1.5"
L1	82"	37"	1.5"
M2	82"	36"	1.5"
M1	82"	33"	1.5"
S	82"	27"	1.5"
C	Custom		



Wood Choice

Code	Wood	Look (Illustration Only)
MG	Mahogany	
GC	Gamari (Chattogram)	
TC	Teak (Chattogram)	
TB	Teak (Burma)	

WOOD SOLID DOOR



WSD-1010



WSD-1011



WSD-1012



WSD-1013



WSD-1014



WSD-1015



WSD-1016



WSD-1017



WSD-1018



WSD-1019



WSD-1020



WSD-1021

Note: You can choose any custom design. You are welcome to visit our sales center and factory.
Visit: www.safa-doors.com or facebook.com/safadoors for more designs.

WOOD SOLID DOOR



WSD-1022



WSD-1023



WSD-1024



WSD-1025



WSD-1026



WSD-1027



WSD-1028



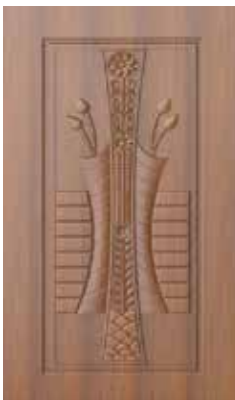
WSD-1029



WSD-1030



WSD-1031



WSD-1032



WSD-1033

Note: You can choose any custom design. You are welcome to visit our sales center and factory.
Visit: www.safa-doors.com or facebook.com/safadoors for more designs.

WOOD PANEL DOOR



WPD-2010



WPD-2011



WPD-2012



WPD-2013



WPD-2014



WPD-2015



WPD-2016



WPD-2017



WPD-2018



WPD-2019



WPD-2020



WPD-2021

Note: You can choose any custom design. You are welcome to visit our sales center and factory.
Visit: www.safa-doors.com or facebook.com/safadoors for more designs.

WOOD PANEL DOOR



WPD-2022



WPD-2023



WPD-2024



WPD-2025



WPD-2026



WPD-2027



WPD-2028



WPD-2029



WPD-2030



WPD-2031



WPD-2032



WPD-2033

Note: You can choose any custom design. You are welcome to visit our sales center and factory.
Visit: www.safa-doors.com or facebook.com/safadoors for more designs.

WOOD GLASS DOOR



WGD-3010



WGD-3011



WGD-3012



WGD-3013



WGD-3014



WGD-3015



WGD-3016



WGD-3017



WGD-3018



WGD-3019



WGD-3020



WGD-3021

Note: You can choose any custom design. You are welcome to visit our sales center and factory.
Visit: www.safa-doors.com or facebook.com/safadoors for more designs.

WOOD LACQUER DOOR



WLD-4010



WLD-4011



WLD-4012



WLD-4013



WLD-4014



WLD-4015



WLD-4016



WLD-4017



WLD-4018



WLD-4019



WLD-4020



WLD-4021

Note: You can choose any custom design. You are welcome to visit our sales center and factory.
Visit: www.safa-doors.com or facebook.com/safadoors for more designs.

WOOD DOUBLE DOOR



WDD-5010



WDD-5011



WDD-5012



WDD-5013



WDD-5014



WDD-5015



WDD-5016



WDD-5017



WDD-5018

Note: You can choose any custom designs. You are welcome to visit our showroom and factory.
Visit: www.safa-doors.com or facebook.com/safadoors for more designs.

OTHER DOORS

**Flush
Door**



**PVC
Door**



**Composite
Door**



**Aluminium
Glass Door**



Note: You can choose any custom designs. You are welcome to visit our showroom and factory.
Visit: www.safa-doors.com or facebook.com/safadoors for more designs.

CONTRACT PROJECTS

Home Furniture



Office Furniture



Kitchen Furniture



Note: You can choose any custom designs. You are welcome to visit our showroom and factory.
Visit: www.safa-doors.com or facebook.com/safadoors for more designs.



SAFA STAR LTD.



+880 17 5295 7060
+88016 7735 2397



sales@safa-doors.com
www.safa-doors.com
www.safastar.com



facebook.com/safadoors
instagram.com/ssl_safadoor
twitter.com/@safa_door



Sales Center: 14/2 Bir Uttam CR Dutta Road,
Sonargaon Road (old), Hatirpool, Dhaka-1205.
Office & Factory: Belma Purba Para, Ashulia
Savar, Dhaka-1341, Bangladesh.